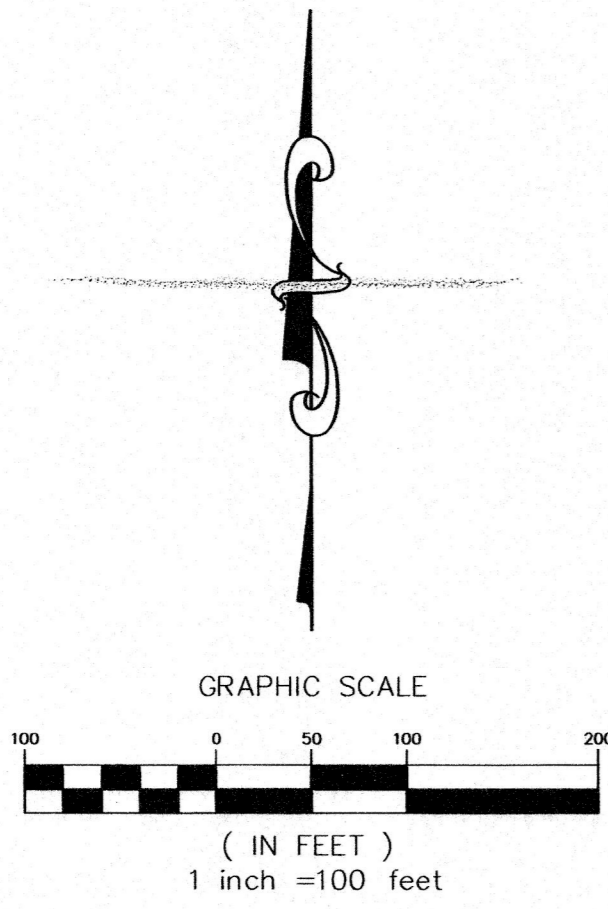


LAKESIDE HERITAGE

A SUBDIVISION BEING A PORTION OF THE EAST 1/2 OF SECTION 10, TOWNSHIP 29 SOUTH,
RANGE 24 EAST, POLK COUNTY, FLORIDA.

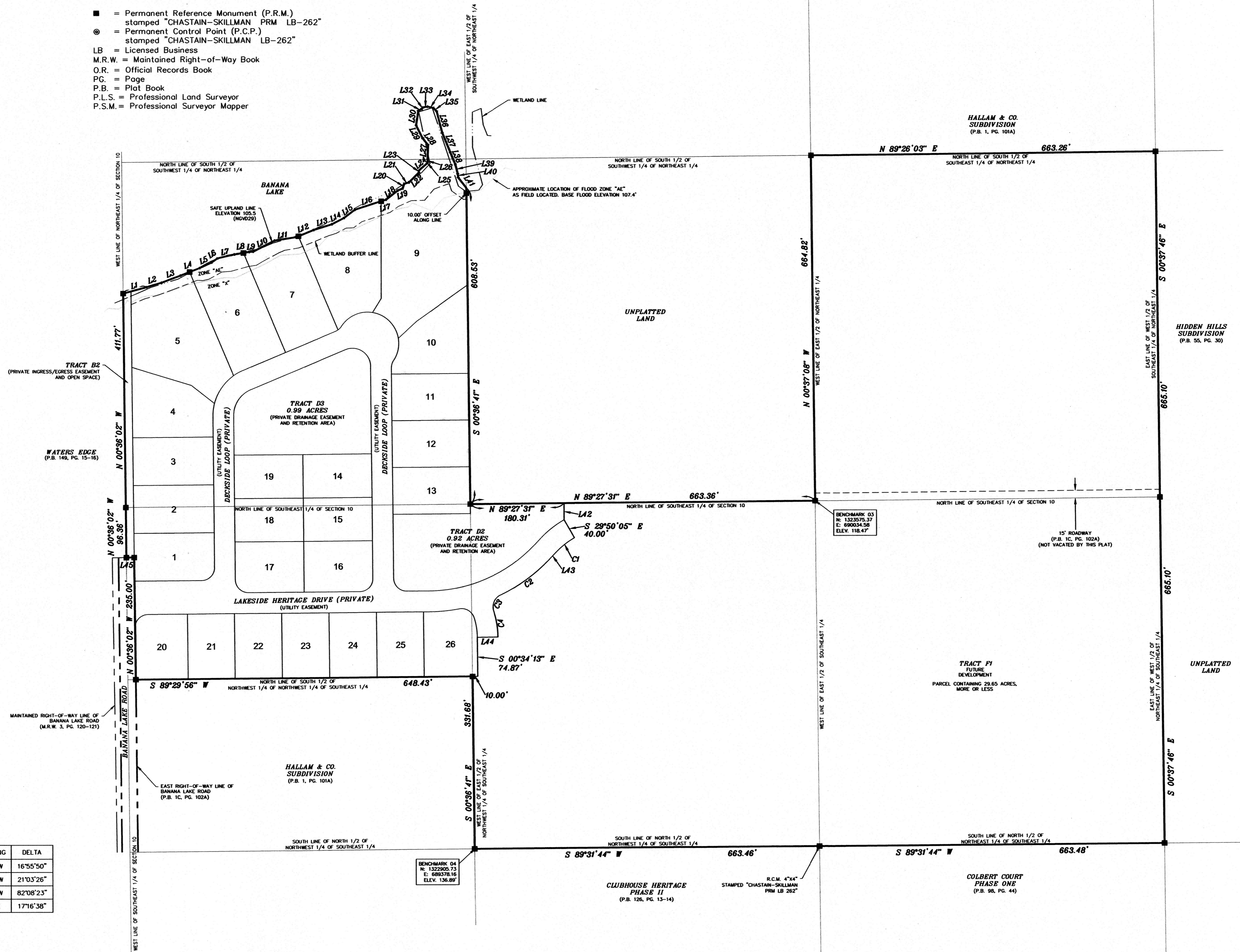


LEGEND:

- = Permanent Reference Monument (P.R.M.) stamped "CHASTAIN-SKILLMAN PRM LB-262"
- ⊙ = Permanent Control Point (P.C.P.) stamped "CHASTAIN-SKILLMAN LB-262"
- LB = Licensed Business
- M.R.W. = Maintained Right-of-Way Book
- O.R. = Official Records Book
- PG. = Page
- P.B. = Plat Book
- P.L.S. = Professional Land Surveyor
- P.S.M. = Professional Surveyor Mapper

LINE #	DIRECTION	DISTANCE
L1	N 74°48'24" E	46.50'
L2	N 73°19'54" E	30.49'
L3	N 69°22'13" E	38.75'
L4	N 68°54'44" E	39.29'
L5	N 65°08'17" E	25.06'
L6	N 54°59'21" E	14.23'
L7	N 76°48'26" E	33.65'
L8	N 80°21'54" E	28.64'
L9	N 84°47'31" E	7.95'
L10	N 62°45'18" E	46.62'
L11	N 80°58'27" E	41.56'
L12	N 68°01'49" E	36.41'
L13	N 72°42'02" E	37.00'
L14	N 62°20'39" E	26.03'
L15	N 52°55'21" E	26.35'
L16	N 72°13'27" E	52.39'
L17	N 72°40'30" E	10.29'
L18	N 51°51'50" E	28.56'
L19	N 66°48'00" E	10.84'
L20	N 18°04'29" E	9.57'
L21	N 75°35'54" E	9.70'
L22	N 44°44'59" E	26.93'
L23	N 02°33'02" W	3.98'
L24	N 49°26'59" E	21.16'
L25	N 22°31'36" E	2.74'
L26	N 00°33'57" W	5.35'
L27	N 02°06'54" E	27.40'
L28	N 38°11'55" W	16.98'
L29	N 26°42'52" W	27.30'
L30	N 08°05'05" E	28.71'
L31	N 65°39'41" E	7.14'
L32	N 43°49'21" E	4.85'
L33	N 81°39'07" E	8.05'
L34	S 77°14'55" E	11.93'
L35	S 44°20'23" E	8.74'
L36	S 14°55'33" E	43.00'
L37	S 22°08'14" E	40.27'
L38	S 22°27'33" E	25.32'
L39	S 14°06'33" E	18.44'
L40	S 06°44'13" E	7.47'
L41	S 38°09'31" E	25.40'
L42	S 00°00'00" E	32.14'
L43	S 43°14'05" W	18.23'
L44	S 89°25'48" W	40.00'
L45	S 89°23'58" W	15.00'

CURVE #	RADIUS	LENGTH	CHORD LENGTH	CHORD BEARING	DELTA
C1	155.00'	45.80'	45.64'	S 51°42'00" W	16°55'50"
C2	320.00'	117.61'	116.95'	S 53°45'48" W	21°03'26"
C3	25.00'	35.84'	32.85'	S 23°13'20" W	82°08'23"
C4	170.00'	51.26'	51.07'	S 91°2'32" E	17°16'38"



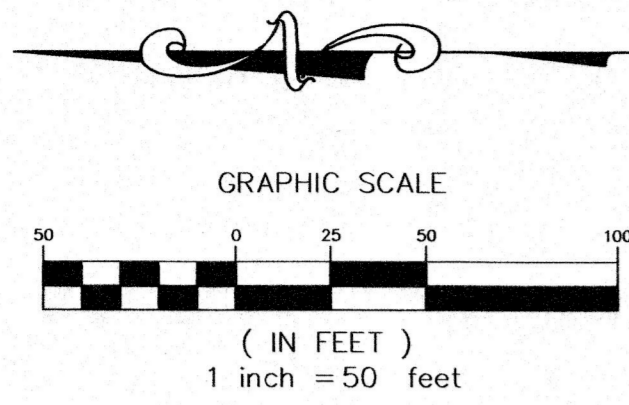
NOTICE: This plat, as recorded in its graphic form, is the official depiction of the subdivided lands described herein and will in no circumstances be supplanted in authority by any other graphic or digital form of the plat. There may be additional restrictions that are not recorded on this plat that may be found in the public records of this county.

LAKESIDE HERITAGE

A SUBDIVISION BEING A PORTION OF THE EAST 1/2 OF SECTION 10, TOWNSHIP 29 SOUTH, RANGE 24 EAST, POLK COUNTY, FLORIDA.

PLAT PREPARED BY:
CHASTAIN-SKILLMAN, INC.
 John Richard Noland, Jr., P.S.M.
 Florida Registration # 5923
 LICENSED BUSINESS NUMBER 262
 4705 OLD STATE ROAD 37
 LAKELAND, FLORIDA 33813
 (863) 646-1402

PLAT BOOK *1166*
 PAGE *28*
 SHEET 3 OF 3



WETLAND BUFFER LINE TABLE

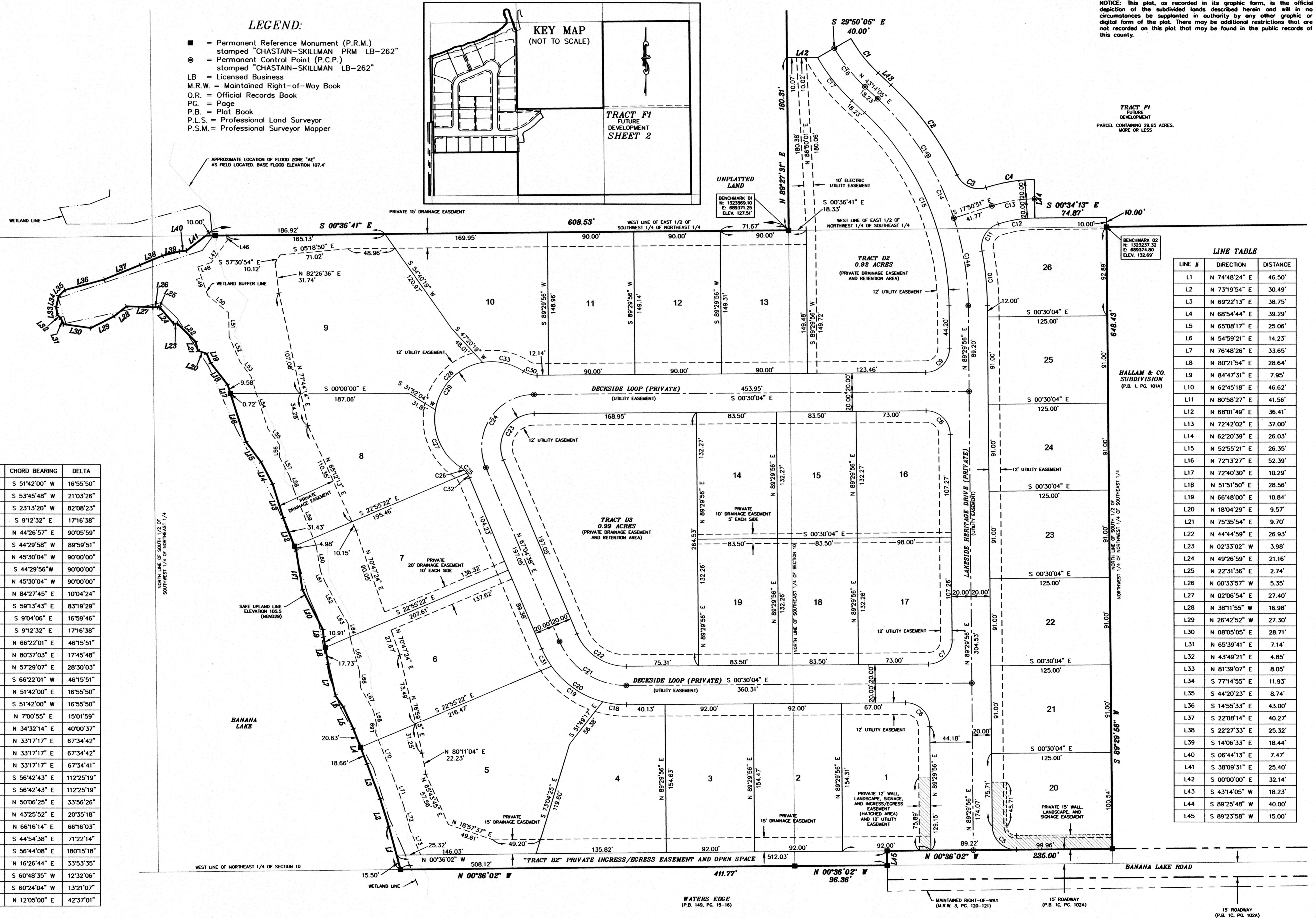
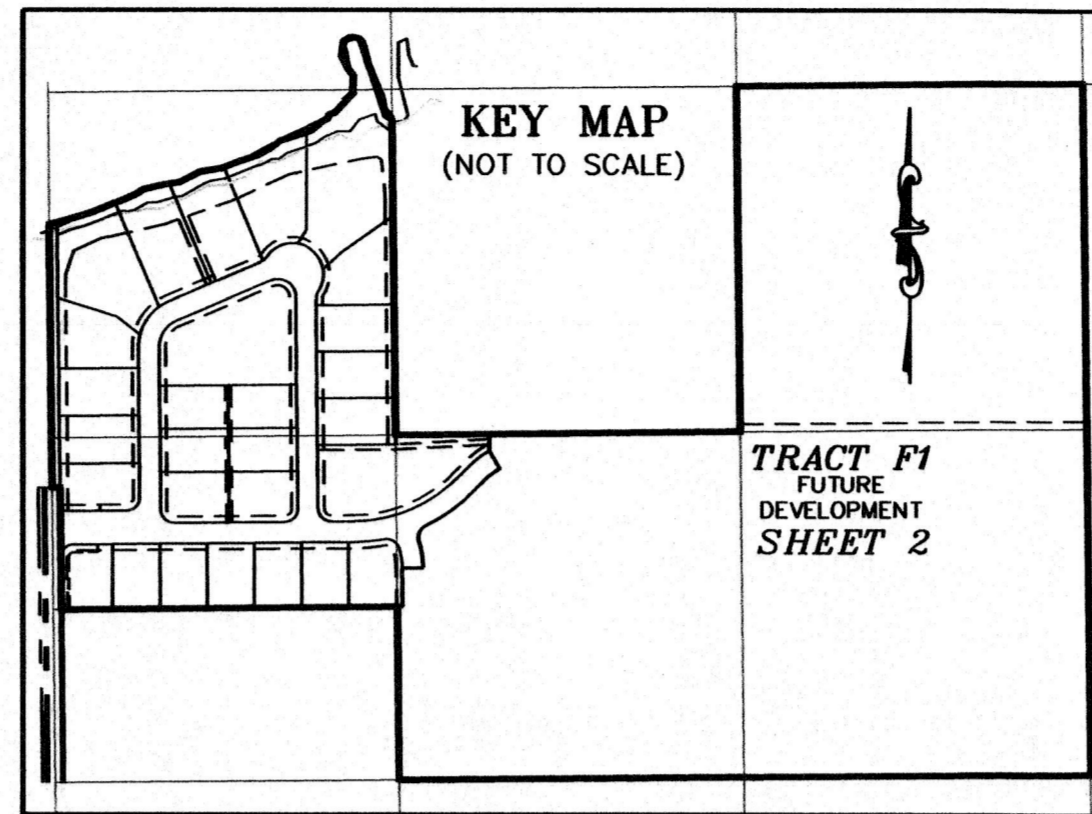
LINE #	DIRECTION	DISTANCE
L46	S 84°16'18" W	5.61'
L47	N 54°14'41" W	28.21'
L48	N 18°15'44" W	14.92'
L49	S 70°37'45" W	31.57'
L50	S 39°39'09" W	28.30'
L51	S 89°05'20" W	24.52'
L52	S 66°41'06" W	28.67'
L53	S 53°32'23" W	19.55'
L54	S 71°56'18" W	57.13'
L55	S 54°04'53" W	19.86'
L56	S 87°31'42" W	13.82'
L57	S 62°20'39" W	22.38'
L58	S 72°42'02" W	15.02'
L59	S 68°01'49" W	61.52'
L60	S 80°05'48" W	27.88'
L61	S 67°13'57" W	11.44'
L62	S 61°30'18" W	36.18'
L63	S 59°11'18" W	13.99'
L64	S 81°03'42" W	16.33'
L65	S 74°30'28" W	34.85'
L66	S 86°23'17" W	17.03'
L67	S 61°26'56" W	28.63'
L68	S 77°18'38" W	12.32'
L69	N 86°57'50" W	10.32'
L70	S 68°54'17" W	49.64'
L71	S 69°42'12" W	31.14'
L72	S 75°01'08" W	26.59'
L73	S 66°46'09" W	28.39'

CURVE TABLE

CURVE #	RADIUS	LENGTH	CHORD LENGTH	CHORD BEARING	DELTA
C1	155.00'	45.80'	45.64'	S 51°42'00" W	16°55'50"
C2	320.00'	117.61'	116.95'	S 53°45'48" W	21°03'26"
C3	25.00'	35.84'	32.85'	S 23°13'20" W	82°08'23"
C4	170.00'	51.26'	51.07'	S 91°23'32" E	17°16'38"
C5	25.00'	39.31'	35.39'	N 44°26'57" E	90°05'59"
C6	25.00'	39.27'	35.36'	S 44°29'58" W	89°59'51"
C7	25.00'	39.27'	35.36'	N 45°30'04" W	90°00'00"
C8	25.00'	39.27'	35.36'	S 44°29'56" W	90°00'00"
C9	25.00'	39.27'	35.36'	N 45°30'04" W	90°00'00"
C10	325.00'	57.14'	57.06'	N 84°27'45" E	10°04'24"
C11	24.84'	36.13'	33.03'	S 59°13'43" E	83°19'29"
C12	130.00'	38.56'	38.42'	S 9°04'06" E	16°59'46"
C13	150.00'	45.23'	45.06'	S 91°23'32" E	17°16'38"
C14	300.00'	242.24'	235.71'	N 66°22'01" E	46°15'51"
C14A	300.00'	93.01'	92.64'	N 80°37'03" E	17°45'48"
C14B	300.00'	149.23'	147.70'	N 57°29'07" E	28°30'03"
C15	280.00'	226.09'	220.00'	S 66°22'01" W	46°15'51"
C16	175.00'	51.71'	51.52'	N 51°42'00" E	16°55'50"
C17	195.00'	57.62'	57.41'	S 51°42'00" W	16°55'50"
C18	95.00'	24.93'	24.85'	N 7°00'55" E	15°01'59"
C19	95.00'	66.34'	65.00'	N 34°32'14" E	40°00'37"
C20	95.00'	112.05'	105.67'	N 33°17'17" E	67°34'42"
C21	75.00'	88.46'	83.42'	N 33°17'17" E	67°34'42"
C22	55.00'	64.87'	61.18'	N 33°17'17" E	67°34'41"
C23	35.00'	68.67'	58.18'	S 56°42'43" E	112°25'19"
C24	55.00'	107.92'	91.42'	S 56°42'43" E	112°25'19"
C25	25.00'	14.81'	14.59'	N 50°06'25" E	33°56'26"
C26	25.00'	8.98'	8.94'	N 43°25'52" E	20°35'18"
C27	60.00'	69.40'	65.59'	N 66°16'14" E	66°16'03"
C28	60.00'	74.74'	70.00'	S 44°54'38" E	71°22'14"
C29	60.00'	188.76'	120.00'	S 56°44'08" E	180°15'18"
C30	25.00'	14.79'	14.57'	N 16°26'44" E	33°53'35"
C31	95.00'	20.78'	20.74'	S 60°48'35" W	12°32'06"
C32	25.00'	5.83'	5.81'	S 60°24'04" W	13°21'07"
C33	60.00'	44.63'	43.61'	N 12°05'00" E	42°37'01"

LEGEND:

- = Permanent Reference Monument (P.R.M.) stamped "CHASTAIN-SKILLMAN PRM LB-262"
- ⊙ = Permanent Control Point (P.C.P.) stamped "CHASTAIN-SKILLMAN LB-262"
- LB = Licensed Business
- M.R.W. = Maintained Right-of-Way Book
- O.R. = Official Records Book
- P.G. = Page
- P.B. = Plat Book
- P.L.S. = Professional Land Surveyor
- P.S.M. = Professional Surveyor Mapper



NOTICE: This plat, as recorded in its graphic form, is the official depiction of the subdivided lands described herein and will in no circumstances be supplanted by any other graphic or digital form of the plat. There may be additional restrictions that are not recorded on this plat that may be found in the public records of this county.

TRACT F1
 FUTURE DEVELOPMENT
 PARCEL CONTAINING 29.85 ACRES, MORE OR LESS

HALLAM & CO.
 SUBDIVISION
 (P.B. 1, PG. 101A)

LINE TABLE

LINE #	DIRECTION	DISTANCE
L1	N 74°48'24" E	46.50'
L2	N 73°19'54" E	30.49'
L3	N 69°22'13" E	38.75'
L4	N 68°54'44" E	39.29'
L5	N 65°08'17" E	25.06'
L6	N 54°59'21" E	14.23'
L7	N 76°48'26" E	33.65'
L8	N 80°21'54" E	28.64'
L9	N 84°47'31" E	7.95'
L10	N 62°45'18" E	46.62'
L11	N 80°58'27" E	41.56'
L12	N 68°01'49" E	36.41'
L13	N 72°42'02" E	37.00'
L14	N 62°20'39" E	26.03'
L15	N 52°55'21" E	26.35'
L16	N 72°13'27" E	52.39'
L17	N 72°40'30" E	10.29'
L18	N 51°51'50" E	28.56'
L19	N 66°48'00" E	10.84'
L20	N 18°04'29" E	9.57'
L21	N 75°35'54" E	9.70'
L22	N 44°44'59" E	26.93'
L23	N 02°33'02" W	3.98'
L24	N 49°26'59" E	21.16'
L25	N 22°31'36" E	2.74'
L26	N 00°33'57" W	5.35'
L27	N 02°06'54" E	27.40'
L28	N 38°11'55" W	16.98'
L29	N 26°42'52" W	27.30'
L30	N 08°05'05" E	28.71'
L31	N 65°39'41" E	7.14'
L32	N 43°49'21" E	4.85'
L33	N 81°39'07" E	8.05'
L34	S 77°14'55" E	11.93'
L35	S 44°20'23" E	8.74'
L36	S 14°55'33" E	43.00'
L37	S 22°08'14" E	40.27'
L38	S 22°27'33" E	25.32'
L39	S 14°06'33" E	18.44'
L40	S 06°44'13" E	7.47'
L41	S 38°09'31" E	25.40'
L42	S 00°00'00" E	32.14'
L43	S 43°14'05" W	18.23'
L44	S 89°25'48" W	40.00'
L45	S 89°23'58" W	15.00'